

Engine	Xinchai 4D35G-007
Gross Power	48 kW (64 hp) @ 2,300 rpm
Breakout Force	20.8 kN
Rated Load	795 kg
Bucket Capacity	0.4 m ³
Operating Weight	2,950 kg

365A

SKID STEER LOADER



TOUGH WORLD. TOUGH EQUIPMENT.

365A SPECIFICATIONS >>>

ENGINE

Emission Regulation	Tier 2 / Stage II
Make	Xinchai
Model	4D35G-007
Gross Power	48 kW (64 hp) @ 2,300 rpm
Peak Torque	230 N · m @ 1,800 rpm
Number of Cylinders	4
Displacement	3.2 L
Cooling Type	Water

ELECTRICAL SYSTEM

System Voltage	12 V
Alternator Output	85 amps

CHAIN TANK

Drive Chain Size	80 HS
------------------	-------

TIRES

Ply Type	Pneumatic
Tire Size	10 - 16.5
Ply Rating	8

HYDRAULIC SYSTEM

System Type	Open
Standard Flow	79.2 L/min
Optional High Flow	120 L/min
Traveling Hydrostatic Pressure	32 MPa
Working Hydrostatic Pressure	20.7 MPa
Hydraulic Cycle Time, Total	8.7 s
Raise	4.1 s
Dump	2.4 s
Lower (float down)	2.2 s

OPERATING WEIGHT

Operating Weight	2,950 kg
------------------	----------

PERFORMANCE

Static Tipping Load	1,590 kg
Rated Load	795 kg
Boom Breakout Force	18.9 kN
Bucket Breakout Force	20.8 kN
Dump Clearance at Full Height Discharge	2,220 mm
Dump Reach at Full Height Discharge	540 mm
Maximum Dump Angle at Full Height	40°
Maximum Hinge Pin Height	2,923 mm
Bucket Rollback at Ground Level	30°
Ground Clearance	204 mm
Angle of Departure	26°
Front Clearance Radius with Bucket	1,800 mm

SERVICE CAPACITIES

Fuel Tank	80 L
Engine Oil	10.4 L
Cooling System	18 L
Hydraulic Reservoir	52 L
Hydraulic System Total	56 L
Chain Tanks, Each	7 L

OPTIONAL ATTACHMENTS

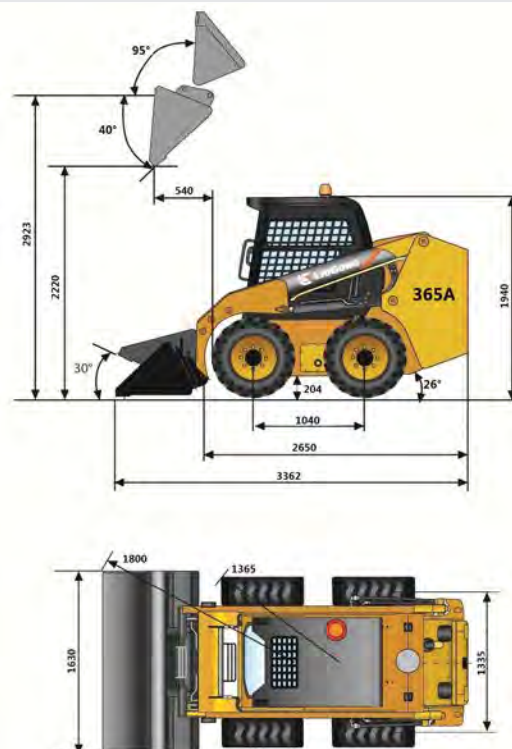
4 in 1 Bucket – 0.4 m³	Auger
Rocket Bucket – 0.4 m³	Cold Planer
Scrap Bucket – 350 to 650 mm	Snow Blade
Hydraulic Hammer	Pick-up Sweeper
Fork	Hydraulic Shear
Lift Boom	Trencher

STANDARD EQUIPMENT

General Bucket - 0.4 m³
Control Safety Interlock
Boom Interlock
Quick Coupler
Open ROPS / FOPS Cab
Flow Standard - 79.2 L/min

OPTIONAL EQUIPMENT

Enclosed ROPS / FOPS Cab with AC
Auxiliary High Flow – 120 L/min
Solid Tire
Tire Chains



Guangxi Liugong Machinery Co., Ltd.

No. 1 Liutai Road, Liuzhou, Guangxi 545007, PR China
T: +86 772 3886124 E: overseas@liugong.com
www.liugong.com

Specifications and designs are subject to change without notice. Machines shown may include optional equipment. Liugong standard and optional equipment may vary from region to region. Please consult your Liugong dealer for information specific to your area.

03/2018 Designed by LiuGong